



# EN LED DC Hz Receiver

US PAT n°7852765/8189620

## 5112070C

Carefully read these instructions before any use.

SIMU S.A.S. au capital de 5 000 000 € - Z.I. Les Giranaux - BP71 - 70103 ARC-LÈS-GRAY CEDEX - FRANCE - RCS VESOUL B 425 650 090 - SIRET 425 650 090 00011 - n° T.V.A CEE FR 87 425 650 090

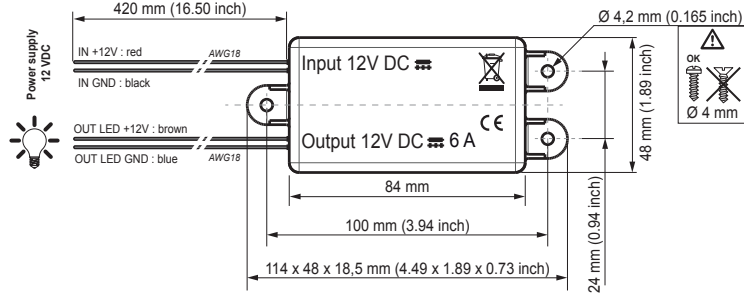
### 1 Installation

#### Mandatory instructions:

- Take care not to drill through the Hz DC receiver.
- The receiver power supply line must be equipped with a sectioning, and an over-current protection.

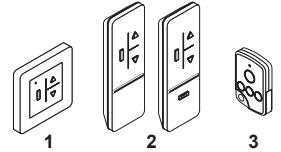
#### Recommendations:

- This receiver is not protected against load dump.
- Radio appliance using the same frequency (433.42 MHz) may reduce our product's performance (Ex: Wireless headphones).
- Keep a minimum distance of 8 in. (0.2m) between two Hz receivers. Keep a minimum distance of 12 in. (0.3m) between Hz receivers and Hz transmitters.
- The receiver must be installed by a licensed electrician or a qualified professional of motorisation or automation in accordance with these instructions and with local and national electrical codes.
- The product does not perform electrical insulation and protection, a SELV (Safety Extra Low Voltage) device upstream must be present in order to protect property and persons according with local and national electrical codes.

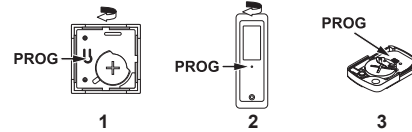


#### Compatible transmitter (max. 12 per receiver):

- 1: COLOR+ Wall Hz transmitter
  - 2: COLOR+ 1/5 mobile Hz transmitter
  - 3: TSA+ transmitter
- USA : use only FCC transmitter range.



#### Location of the PROG button on Hz transmitters:

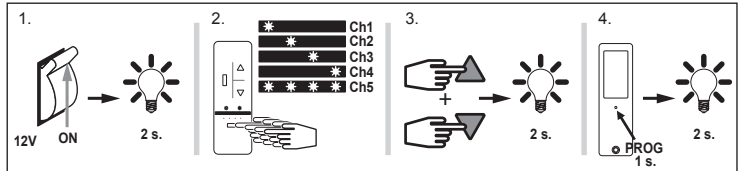


### 2 Programming

#### 2.1- Programming the first transmitter:

1. Switch the 12 V power supply of the receiver ON. The Led ramp will turn on for two seconds.
2. Select the desired channel\*.
3. Press simultaneously the UP and DOWN buttons of the transmitter, the Led ramp will turn ON for two seconds.
4. Press the **PROG button** 1 second, the Led ramp will turn ON for two seconds. The operation is completed.

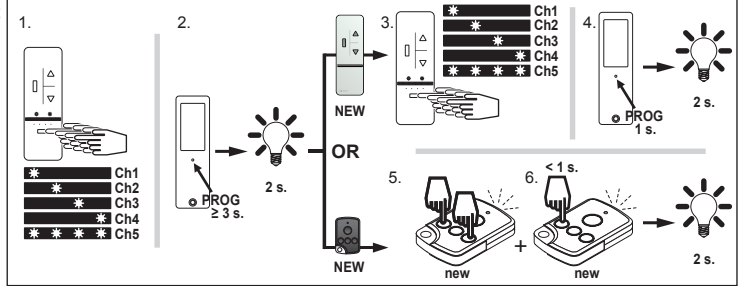
2.1



#### 2.2- Adding a new transmitter:

1. Select a channel already programmed\*.
  2. Press for 3 seconds the program button (PROG) until the Led ramp turns ON for two seconds.
  3. Select the channel of the new transmitter you wish to add\*.
  4. Press the **PROG button** for 1 second, the Led ramp will turn ON for two seconds. The operation is completed.
  5. Press simultaneously the 2<sup>nd</sup> and 4<sup>th</sup> buttons on the TSA+ you wish to add as shown in the picture, the TSA+'s Led will blink.
  - 6- Press the desired channel (button) on the TSA+ you wish to add, the Led ramp turn on for two seconds. The operation is completed.
- To remove a transmitter (Channel): repeat stages 1, 2 with a transmitter (Channel) that currently controls the receiver and stage 3, 4 or 5, 6 with the transmitter (Channel) to be deleted from the receiver).

2.2

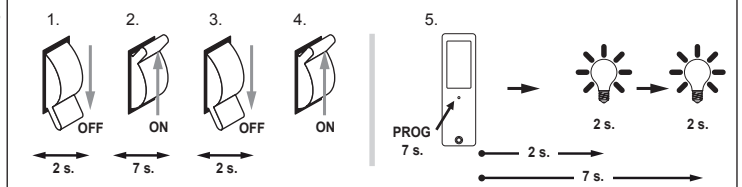


\* 2.1 (step 2) and 2.2 (step 1 & 3) only in case of multi channel transmitters (COLOR).

#### 2.3- Cancelling programming:

1. Switch off the 12V power supply to the receiver for **2 seconds**.
2. Switch the power to the receiver back on for **7 seconds**.
3. Switch off the power supply to the receiver for **2 seconds**.
4. Switch the power to the receiver back on. The Led ramp will blink for 2 minutes.
5. Press on the transmitter's **PROG button** for more than 7 seconds, the Led ramp will turn ON for 2 seconds twice in succession. The operation is completed.

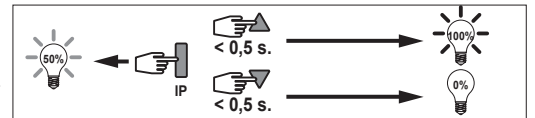
2.3



### 3 Functioning

#### Led ramp control:

- A short press (<0,5 sec.) on the ▲ button to turn the Led ramp on (100%).
- A short press (<0,5 sec.) on the ▼ button to turn off the Led ramp (0%).
- A short press (<0,5 sec.) on the Stop button to turn ON the Led ramp at the Intermediate Position (ex: 50%).



#### Led ramp dimming:

- A long press (> 0,5 sec.) on the ▲ or ▼ keys increase or decrease the level of the Led ramp (step: 5% each 0.16 sec, 0% at minimum, 100% at maximum).



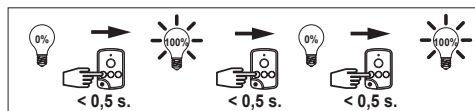
#### Recording/controlling/deleting intermediate position:

- Recording : Press on the ▲ or ▼ button until you reach the desired light level, then press for 5 seconds on the Stop button, the Led ramp will turn ON for 2 seconds.
- Controlling : A short press of the Stop button will the turn ON Led ramp to the memorized intermediate level.
- Deleting : A short press on Stop button and the Led ramp will turn ON to the memorized level. Then press for 5 seconds on the Stop button, the Led ramp will turn on for 2 seconds.

#### Led ramp control:

- Each press of the button toggles between ON and OFF

No dimming possible with this transmitter.



### 4 Technical characteristics

- Power supply: 12VDC (min.: 11V/max.:16V)
- Control output: 72W at 12V for incandescent/halogen or Led bulbs.
- Radio: 433.42 MHz
- Storage temperature : -20°C +80°C
- Temperature of use: -20°C +70°C (and exceptionally up to +80°C (use limited to 5 min))
- Over-current protection on the output.
- Lighting time-out 3 hours.
- Please ensure you dispose of waste products using your local refuse collection system.
- European compliance: CE
- Protection index : IP 55 — IK Index: IK05.
- Safety level : Class III.
- No need for forced cooling system.
- Frequency range: 433,050 MHz – 434,790 MHz F: 433,420 MHz
- Max power used: ERP < 10 mW.

SIMU hereby declares that the radio equipment covered by these instructions is in compliance with the requirements of Radio Directive 2014/53/EU and the other essential requirements of the applicable European Directives. The full text of the EU declaration of conformity is available at [www.simu.com](http://www.simu.com).