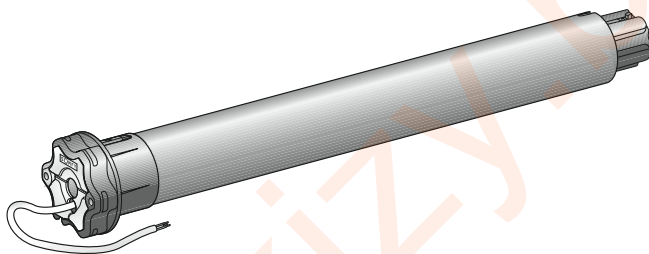


Pergola sc io



- FR** Notice installateur
- DE** Installationsanleitung
- IT** Guida all'installazione
- NL** Montagehandleiding
- EN** Installation guide
- ES** Guía de instalación
- PT** Guia de instalação
- EL** Οδηγός εγκατάστασης
- TR** Tesisatçı Kılavuzu

Ref. 5069578A

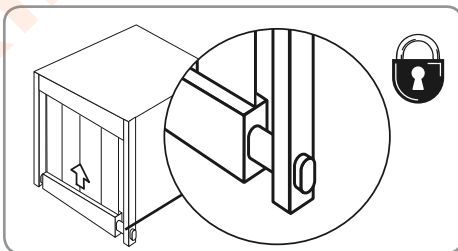
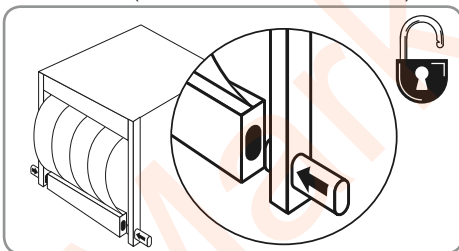


CONTENTS

1. Introduction	37	6. Operation	42
2. Safety	38	6.1. Standard operation	42
2.1. Safety and responsibility	38	6.2. Operating with a Somfy io sensor	42
2.2. Specific safety advice	38	6.3. Feedback	42
3. Installation	38	7. Additional settings	43
3.1. Motor preparation	38	7.1. Favourite position (my)	43
3.2. Tube preparation	38	7.2. Adding/Deleting Somfy io control points and io sensors	43
3.3. Motor/tube assembly	39	7.3. Modifying end limits	43
3.4. Installing the tube/motor assembly	39	7.4. Advanced functions	43
4. Wiring	39	8. Tips and recommendations	44
5. Commissioning	40	8.1. Questions about the Pergola sc io?	44
5.1. Identifying setting steps already completed	40	8.2. Replacing a lost or broken Somfy io control point	45
5.2. Pre-programming the Somfy io local control point	40	8.3. Restoring the original configuration	45
5.3. Checking the motor's direction of rotation	40	9. Technical data	45
5.4. Setting the end limits	41		
5.5. Programming the first Somfy io local control point	42		
5.6. Checking the settings	42		

1. INTRODUCTION

The Pergola sc io motor is designed to drive all vertical blinds used on terraces with or without a manual latch (with or without fabric tension).



What is io-homecontrol®?

The Pergola sc io uses io-homecontrol®, the new universal and secure wireless communication protocol, shared by the major manufacturers in the world of home automation. io-homecontrol® enables all comfort and security equipment to intercommunicate and be actuated via a single control point.

The flexibility and perfect compatibility of the io-homecontrol® system provides support for you as your needs evolve. You can start by automating roller shutters and the front door, then equip the outside blinds, the gate and garage door or garden lighting with the io-homecontrol® system.

These scalable items of equipment are still compatible with the existing system, thanks to io-homecontrol® technology, which ensures their inter-operability.

For further information please visit the website www.io-homecontrol.com.



io-homecontrol® provides advanced and secure radio technology that is easy to install. io-homecontrol® labelled products communicate with each other, improving comfort, security and energy savings.

www.io-homecontrol.com

2. SAFETY

2.1. Safety and responsibility

Before installing and using this product, please read this guide carefully.

This Somfy product must be installed by a professional motorisation and home automation installer, for whom this guide is intended.

Moreover, the installer must comply with current standards and legislation in the country in which the product is being installed, and inform his customers of the operating and maintenance conditions for the product.

Any use outside the area of application specified by Somfy is prohibited. This invalidates the warranty and discharges Somfy of all liability, as does any failure to comply with the instructions given herein.

Never begin installing without first checking the compatibility of this product with the associated equipment and accessories.

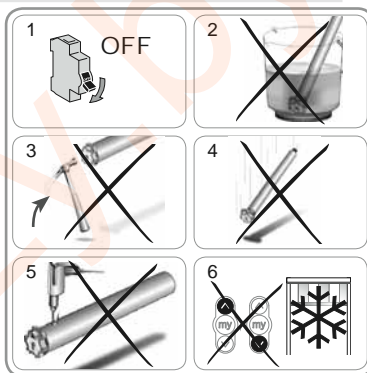
2.2. Specific safety advice

In addition to the safety instructions described in this guide, be sure to also observe the instructions set out in the attached document "*Safety instructions to follow and keep*".

1) Switch off the mains supply for the blind before performing any service operation in the vicinity.

To avoid damaging the product:

- 2) Never immerse it in liquid!
- 3) Avoid impacts!
- 4) Do not drop it!
- 5) Never drill holes in it!
- 6) Avoid moving the blind if ice has formed on it.

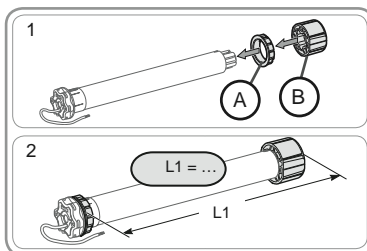


3. INSTALLATION

The Pergola sc io must be installed in a location sheltered from inclement weather.

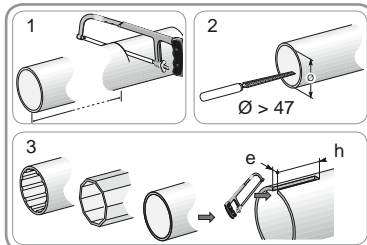
3.1. Motor preparation

- 1) Fit the crown (A) and the drive wheel (B) to the motor.
- 2) Measure the length (L1) between the interior edge of the motor head and the outer rim of the drive wheel.



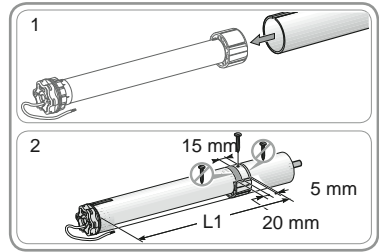
3.2. Tube preparation

- 1) Cut the roller tube to the required length.
- 2) Deburr the roller tube and remove the swarf.
- 3) For smooth roller tubes, cut a notch with the following measurements:
 - e = 4 mm
 - h = 28 mm.



3.3. Motor/tube assembly

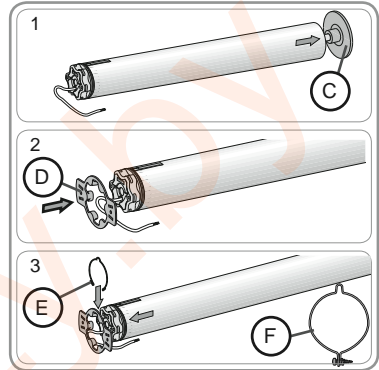
- Slide the motor into the roller tube.
For smooth roller tubes, position the notch previously cut on the crown.
- For safety reasons, fix the roller tube to the drive wheel with 4 x Ø 5 mm self-tapping screws or 4 x Ø 4.8 mm steel pop rivets located:
 - at least 5 mm from the outer rim of the drive wheel: L1 - 5, and
 - no more than 15 mm from the outer rim of the drive wheel: L1 - 15.



The screws or pop rivets must only be attached to the drive wheel and not to the motor.

3.4. Installing the tube/motor assembly

- Fit the tube/motor assembly to the end bracket (C).
- Fit the tube/motor assembly to the motor bracket (D).
- Depending on the type of bracket, position the retaining ring (E) (for motors ≥ 85 Nm with a retaining ring, it is essential to use the locking retaining ring (F)).

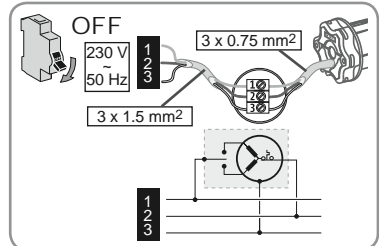
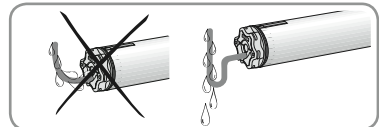


4. WIRING

Always make a loop in the power supply cable to prevent water entering the motor!

- Cut off the mains power supply.
- Connect the motor according to the information in the table below:


	230 V ~ 50 Hz	Motor cable
1	Brown	Live (P)
2	Blue	Neutral (N)
3	Yellow/Green	Earth (\perp)



5. COMMISSIONING

The guide only describes commissioning using a Situo io type Somfy io local control point. For commissioning using any other io control point, refer to the corresponding guide.

5.1. Identifying setting steps already completed

 Only one motor should be powered at a time.
Switch on the power and follow procedure "a" or "b", according to the blind's reaction:

a The blind moves briefly

The end limits are set and no Somfy io control point has been programmed.
Go to the section "*Programming the first Somfy io local control point*".
or

b The blind does not move

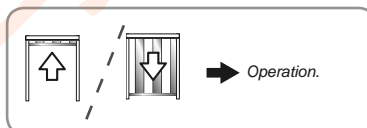
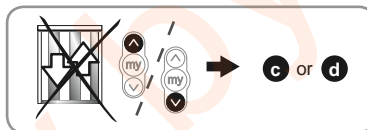
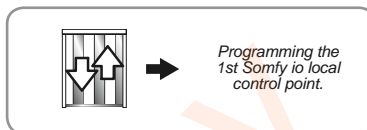
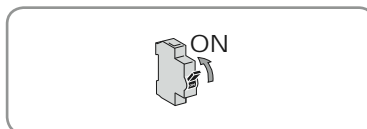
Press the Up or Down button, and follow procedure "c" or "d" according to the blind's reaction:

c The blind still does not move

The end limits are not set and no Somfy io control point has been programmed.
Go to the section "*Pre-programming the Somfy io local control point*".
or

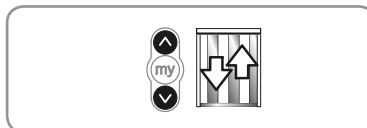
d The blind is fully raised or lowered

The end limits are set and the Somfy io control point has been programmed.
Go to the section "*Operation*".



5.2. Pre-programming the Somfy io local control point

- Press the Up and Down buttons simultaneously; the blind will move briefly; the Somfy io local control point has been pre-programmed into the motor.

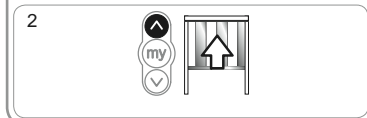
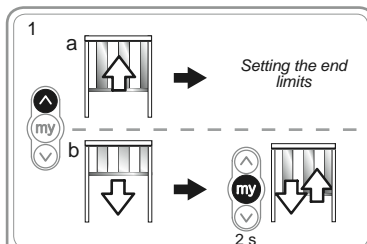


5.3. Checking the motor's direction of rotation

1) Press the Up button:

- If the blind is raised, the direction of rotation is correct; go to the section "*Setting the end limits*".
- If the blind is lowered, the direction of rotation is incorrect; press the "my" button until the blind moves briefly; the direction of rotation has been modified.

2) Press the Up button to check the direction of rotation.





5.4. Setting the end limits

5.4.1. Semiautomatic end limit setting for vertical blinds

For vertical blinds with a cassette, the upper end limit is set automatically, while the lower end limit must be set manually.

i It is always possible to define a new lower end limit before programming it.

Setting the lower end limit

i For vertical blinds with latches, position the blind level with or below the latches.

1) Put the blind in the lower end limit position.

! Press and hold the Down button for > 2 seconds to lower the blind in one continuous movement.

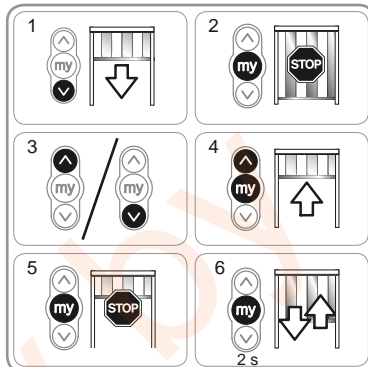
2) Stop the blind at the desired point.

3) If necessary, adjust the position of the blind using the Up or Down buttons.

4) Press the "my" and Up buttons simultaneously: the blind will be raised in one continuous movement, even after the "my" and Up buttons have been released.

5) At mid-height, briefly press the "my" button to stop the blind.

6) Press the "my" button again until the blind moves briefly: the end limits have been programmed. Go to the section "*Programming the first Somfy io local control point*".



5.4.2. Manually setting the end limits on vertical blinds

For vertical blinds without a cassette, the upper and lower end limits must be set.

i It is always possible to define new upper or lower end limits before programming them.

Setting the upper end limit

1) Position the blind at the upper end limit.

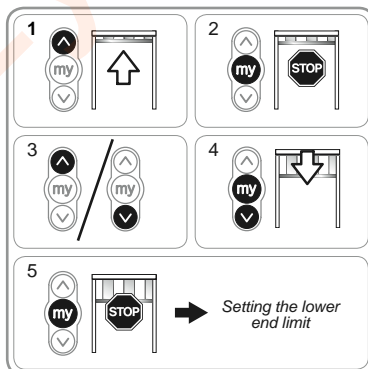
! Press and hold the Up button for > 2 seconds to raise the blind in one continuous movement.

2) Stop the blind at the desired point.

3) If necessary, adjust the position of the blind using the Up or Down buttons.

4) Press the "my" and Down buttons simultaneously: the blind will be lowered in one continuous movement, even after the "my" and Down buttons have been released.

5) At mid-height, briefly press the "my" button to stop the blind and go to the next step.



Setting the lower end limit

i For vertical blinds with latches, position the blind level with or below the latches.

1) Put the blind in the lower end limit position.

! Press and hold the Down button for > 2 seconds to lower the blind in one continuous movement.

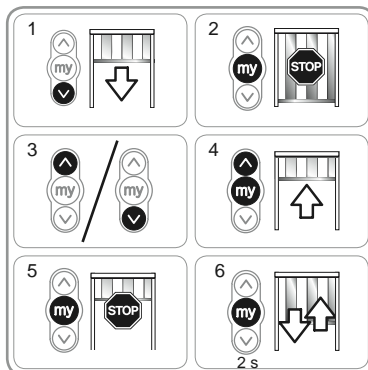
2) Stop the blind at the desired point.

3) If necessary, adjust the position of the blind using the Up or Down buttons.

4) Press the "my" and Up buttons simultaneously: the blind will be raised in one continuous movement, even after the "my" and Up buttons have been released.

5) At mid-height, briefly press the "my" button to stop the blind.

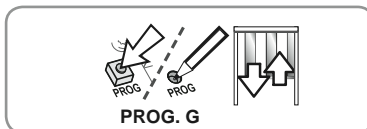
6) Press the "my" button again until the blind moves briefly: the end limits have been programmed. Go to the section "*Programming the first Somfy io local control point*".



5.5. Programming the first Somfy io local control point

5.5.1. Using a pre-programmed Somfy io local control point

- Briefly press the PROG button on this control point (G): the blind will make a brief movement; the control point has been programmed.

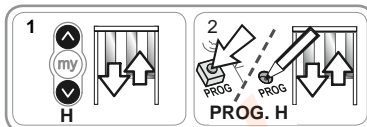


or

5.5.2. After a power cut

i When the power is switched on, the blind makes a brief movement.

- 1) Press the Up and Down buttons simultaneously on the new control point (H) until the blind moves briefly.
- 2) Briefly press the PROG button on this control point (H): the blind will move briefly; the control point has been programmed.



5.6. Checking the settings

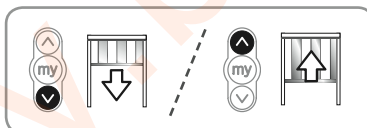
- Check the settings of the upper and lower end limits using the Somfy io local control point.

6. OPERATION

6.1. Standard operation

6.1.1. Up and Down buttons

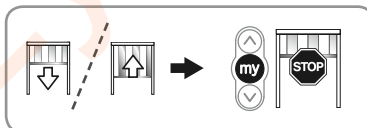
Briefly press the Up or Down button to raise or lower the blind fully.



6.1.2. STOP function

The blind is moving.

- Briefly press the "my" button: the blind will stop.



6.1.3. Favourite position (my)

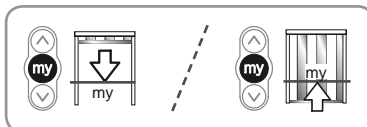
Definition

Besides the upper and lower positions, an intermediate position known as the "favourite (my) position" may be programmed in the motor.

i A favourite position is stored automatically. To modify the favourite (my) position, see the section entitled "Additional settings".

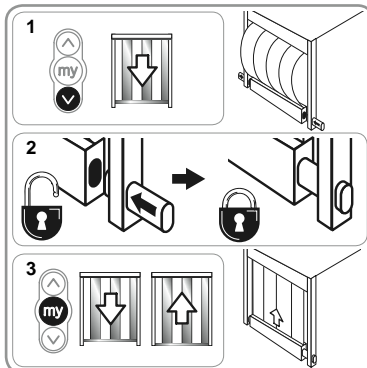
To use the favourite (my) position:

- Briefly press the "my" button: the blind will start to move, and stop in the favourite position (my).



6.1.4. Fabric tension (my)

- 1) Position the blind at the lower end limit
- 2) **⚠** Ensure that the latches are locked.
- 3) Briefly press the "my" button: the blind will start to move (lower then raise) and stop automatically to tension the blind fabric.



6.2. Operating with a Somfy io sensor

Refer to the corresponding guide.

6.3. Feedback

After each order, the Pergola sc io sends a message. This information is processed by the io two-way control points.

EN

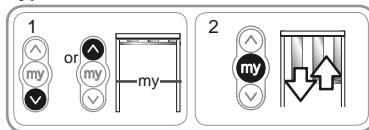
7. ADDITIONAL SETTINGS

7.1. Favourite position (my)

7.1.1 Programming or modifying the favourite position (my)

The procedure to follow for programming or modifying the favourite position (my) is identical.

- 1) Put the blind in the desired favourite position (my).
- 2) Press the "my" button until the blind moves briefly: the favourite position (my) has been programmed.



7.2. Adding/Deleting Somfy io control points and io sensors

Refer to the corresponding guide.



7.3. Modifying end limits

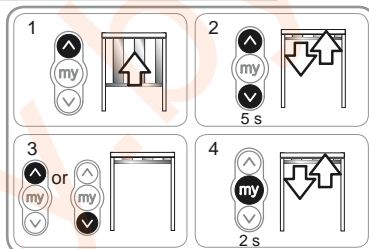
Readjusting the upper end limit

i The upper end limit cannot be readjusted if the motor was set in semiautomatic mode

- 1) Position the blind at the upper end limit.

! Press and hold the Up button for > 2 seconds to raise the blind in one continuous movement.

- 2) Press the Up and Down buttons simultaneously until the blind moves briefly: the motor is in setting mode.
- 3) Adjust the blind's top position using the Up or Down buttons.
- 4) Press the "my" button until the blind moves briefly: the new upper end limit has been programmed.



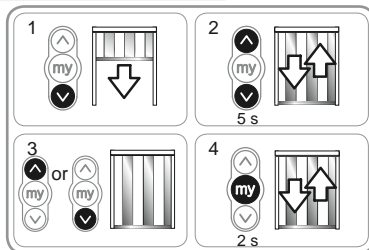
Readjusting the lower end limit

i For vertical blinds with latches, position the blind level with or below the latches.

- 1) Position the blind at the lower end limit.

! Press and hold the Down button for > 2 seconds to lower the blind in one continuous movement.

- 2) Press the Up and Down buttons simultaneously until the blind moves briefly: the motor is in setting mode.
- 3) Adjust the blind's bottom position using the Up or Down buttons.
- 4) Press the "my" button until the blind moves briefly: the new lower end limit has been programmed.



7.4. Advanced functions

! Please contact the manufacturer of the blind before using these functions to confirm the compatibility of your installation.

7.4.1. "Fabric tension" function for blinds with manual latches

This function is used to increase or decrease the blind fabric tension to three levels (high-medium-low).

The motor is factory set at the medium level.

For safety reasons, this function can only be accessed via the Somfy io control point in 3 scenarios:

- After validation of the settings and before programming the first Somfy io control point.
- After programming the first Somfy io control point and for the next 4 cycles.
- After a power cut, and for the next 4 cycles.

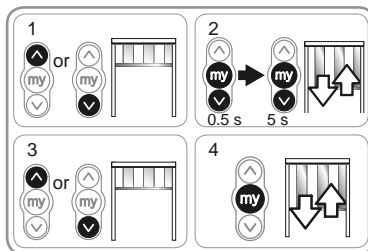


To activate this function:

- 1) Put the blind in the middle position.
- 2) Briefly press the "my" and Down buttons simultaneously, then immediately afterwards press and hold the "my" and Down buttons until the blind moves briefly.

⚠ The motor is in programming mode for just 10 seconds.

- 3) Adjust the fabric tension using the Up or Down buttons.
 - To increase the fabric tension, press the Up button until the blind moves slowly: the fabric tension has switched to "high".
 - To decrease the fabric tension, press the Down button until the blind moves slowly: the fabric tension has switched to "low".
- 4) Press the "my" button until the blind moves briefly: the new fabric tension has been programmed.



7.4.2. "Closing force" function on cassette blinds only

This function enables the closing force of the awning cassette to be increased or decreased over 3 levels (high/medium/low).

The motor's default factory setting is the low level.

For safety reasons, this function can only be accessed via the Somfy io control point in 3 scenarios:

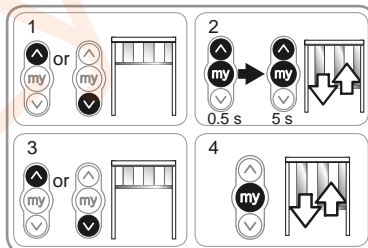
- After validation of the settings and before programming the first Somfy io control point.
- After programming the first Somfy io control point and for the next 4 cycles.
- After a power cut, and for the next 4 cycles.

To activate this function:

- 1) Put the blind in the middle position.
- 2) Briefly press the "my" and Up buttons simultaneously, then immediately afterwards press and hold the "my" and Up buttons until the awning moves.

⚠ The motor is in programming mode for just 10 seconds.

- 3) Adjust the closing force using the Up or Down buttons.
 - To increase the closing force, press the Up button until the blind moves slowly: the cassette awning closing force is increased to the upper threshold.
 - To decrease the closing force, press the Down button until the blind moves slowly: the cassette awning closing force is decreased to the lower threshold.
- 4) Press the "my" button until the awning moves: the new closing force has been programmed.



8. TIPS AND RECOMMENDATIONS

8.1. Questions about the Pergola sc io?

Observations	Possible causes	Solutions
The blind does not operate.	The wiring is incorrect.	Check the wiring and modify it if necessary.
	The motor is hot.	Wait until the motor cools down.
	An incorrect cable has been used.	Check the cable and ensure it has 3 strands.
	The Somfy io control point battery is low.	Check whether the battery is weak and replace it if necessary.
	The control point is not compatible.	Check for compatibility and replace the control point if necessary.
The blind stops too soon.	The crown is incorrectly positioned.	Fit the crown correctly.
	The end limits have been incorrectly set.	Readjust the end limits.
	The Somfy io control point used has not been programmed into the motor.	Use a programmed control point or program this control point.

8.2. Replacing a lost or broken Somfy io control point

Refer to the corresponding guide.

8.3. Restoring the original configuration

⚠ This reset deletes all control points, all the sensors and all the end limit settings, and resets the motor's direction of rotation and favourite position (my). However, the fabric tension function is retained.

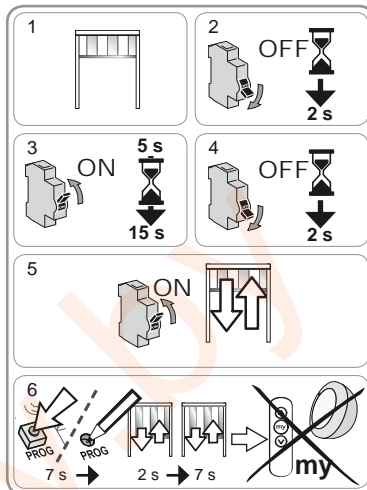
⚠ Only switch off the power for the motor to be reset.

- 1) Put the blind in the middle position (if possible).
- 2) Cut the power supply for 2 seconds.
- 3) Switch the power supply back on for 5 to 15 seconds.
- 4) Cut the power supply for 2 seconds.
- 5) Switch the power supply back on: the blind moves for several seconds.

i If the blind is at the upper or lower end limit, it will move briefly.

- 6) Hold down the PROG button: the blind will make a brief first movement followed by a second a few moments later. The motor is configured with the factory settings.

- Repeat the procedures from the *Commissioning*' section



9. TECHNICAL DATA

Radio frequency	868-870 MHz io-homecontrol®, two-way Tri-band
Power supply	230 V ~ 50 Hz
Operating temperature	- 20°C to + 70°C
Protection rating	IP 44
Maximum number of associated control points and sensors	9
Safety level	Class I

Markizy.by

Somfy Worldwide

Argentina:
Somfy Argentina
Tel: +55 11 (0) 4737-3700

Australia:
Somfy PTY LTD
Tel: +61 (2) 8845 7200

Austria:
Somfy GesmbH
Tel: +43 (0) 662 / 62 53 08 - 0

Belgium:
Somfy Belux
Tel: +32 (0) 2 712 07 70

Brasil:
Somfy Brasil Ltda
Tel: +55 11 3695 3585

Canada:
Somfy ULC
Tel: +1 (0) 905 564 6446

China:
Somfy China Co. Ltd
Tel: +8621 (0) 6280 9660

Croatia :
Somfy Predstavništvo
Tel: +385 (0) 51 502 640

Cyprus :
Somfy Middle East
Tel: +357(0) 25 34 55 40

Czech Republic:
Somfy, spol. s.r.o.
Tel: (+420) 267 913 076 - 8

Denmark:
Somfy Nordic Danmark
Tel: +45 65 32 57 93

Export:
Somfy Export
Tel: + 33 (0)4 50 96 70 76
Tel: + 33 (0)4 50 96 75 53

Finland:
Somfy Nordic AB Finland
Tel: +358 (0)9 57 130 230
Fax: +358 (0)9 57 130 231

France :
Somfy France
Tel. : +33 (0) 820 374 374

Germany:
Somfy GmbH
Tel: +49 (0) 7472 930 0

Greece:
SOMFY HELLAS S.A.
Tel: +30 210 6146768

Hong Kong:
Somfy Co. Ltd
Tel: +852 (0) 2523 6339

Hungary :
Somfy Kft
Tel: +36 1814 5120

India:
Somfy India PVT Ltd
Tel : +91) 11 4165 9176

Indonesia:
Somfy Jakarta
Tel: +(62) 21 719 3620

Iran:
Somfy Iran
Tel: +98-217-7951036

Italy:
Somfy Italia s.r.l
Tel: +39-024847181

Japan:
SOMFY KK
Tel: +81 (0)45 481 6800

Jordan:
Somfy Jordan
Tel: +962-6-5821615

Kingdom of Saudi Arabia:
Somfy Saoudi
Riyadh :
Tel: +966 1 47 23 020
Tel: +966 1 47 23 203
Jeddah :
Tel: +966 2 69 83 353

Kuwait:
Somfy Kuwait
Tel: +965 4348906

Lebanon:
Somfy Lebanon
Tel: +961 (0) 1 391 224

Malaysia:
Somfy Malaysia
Tel:+60 (0) 3 228 74743

Mexico:
Somfy Mexico SA de CV
Tel: 52 (55) 4777 7770

Morocco:
Somfy Maroc
Tel: +212-22443500

Netherlands:
Somfy BV
Tel: +31 (0) 23 55 44 900

Norway:
Somfy Nordic Norge
Tel: +47 41 57 66 39

Poland:
Somfy SP Z.O.O.
Tel: +48 (22) 50 95 300

Portugal:
Somfy Portugal
Tel. +351 229 396 840

Romania:
Somfy SRL
Tel.: +40 - (0)368 - 444 081

Russia:
Somfy LLC.
Tel: +7 495 781 47 72

Serbia:
SOMFY Predstavništvo
Tel: 00381 (0)25 841 510

Singapore:
Somfy PTE Ltd
Tel: +65 (0) 6383 3855

Slovak republic:
Somfy, spol. s r.o.
Tel: +421 337 718 638
Tel: +421 905 455 259

South Korea:
Somfy JOO
Tel: +82 (0) 31 600 5250

Spain:
Somfy Espana SA
Tel: +34 (0) 934 800 900

Sweden:
Somfy Nordic AB
Tel: +46 (0)40 16 59 00

Switzerland: Somfy A.G. -
Tel: +41 (0) 44 838 40 30

Syria: Somfy Syria
Tel: +963-9-55580700

Taiwan:
Somfy Development and
Taiwan Branch
Tel: +886 (0) 2 8509 8934

Thailand:
Bangkok Regional Office
Tel: +66 (0) 2714 3170

Tunisia:
Somfy Tunisia
Tel: +216-98303603

Turkey:
Somfy TurkeyMah.,
Tel: +90 (0) 216 651 30 15

United Arab Emirates:
Somfy Gulf Jebel Ali Free Zone
Tel: +971 (0) 4 88 32 808

United Kingdom:
Somfy Limited
Tel: +44 (0) 113 391 3030

United States:
Somfy Systems
Tel: +1 (0) 609 395 1300